

# AS/NZS 3001.2 VENTING CHECKLIST

For Muller Energy batteries installed in a habitable space

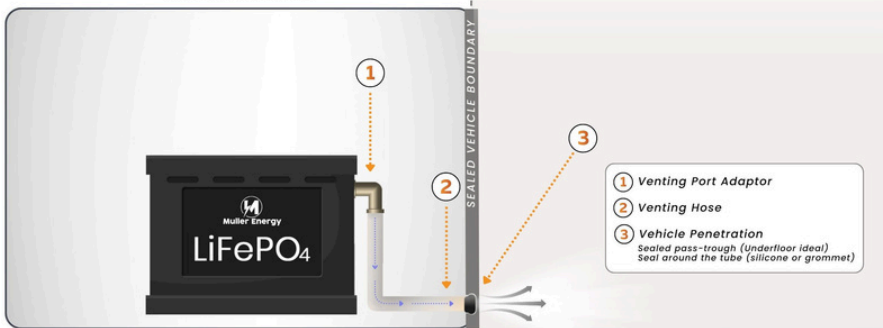
AS/NZS 3001.2 requires batteries in habitable spaces to be sealed off from the living area and vented to the outside. Muller Energy meets this by housing the cells inside a securely sealed internal battery compartment and providing an external venting kit that routes any gases, in the very unlikely event of a cell failure, safely to the outside of the vehicle.

**This checklist helps you confirm the vent path is routed safely to the exterior**

## AS 3001.2 Compliant Install

**Inside Vehicle**  
(‘habitable space’)

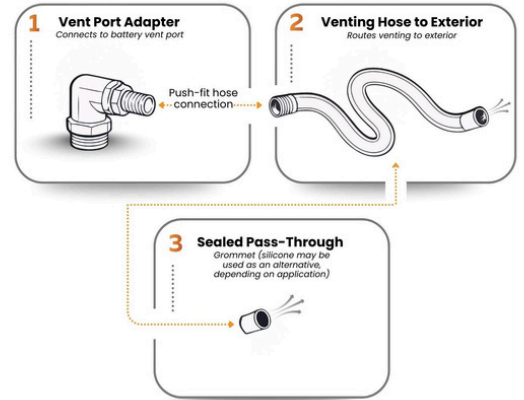
**Outside Vehicle**



\*Illustration for explanatory purpose only. No dimensions or installation instructions shown.

## What's in the Muller Energy Venting kit?

The Muller Energy Venting Kit simplifies compliant lithium battery installations with three key components.



\*Illustration for explanatory purpose only. No dimensions or installation instructions shown.

## CHECKLIST

### A) KIT CONTENTS

- ✓ Vent port adaptor
- ✓ Venting hose (approx. 1 m)
- ✓ Grommet (for pass-through)

### B) INSTALL STEPS

#### BEFORE YOU START

- Choose an exit point that vents fully outside the vehicle (underfloor preferred)
- Plan a short, direct hose route with no sharp bends or kinks

#### INSTALL

- Remove vent port cover (if fitted)
- Fit vent port adaptor by hand (do not overtighten)
- Push hose fully onto adaptor until firmly seated
- Route hose to exit point without kinks
- Use grommet at pass-through and seal around the hose
- Confirm hose terminates fully outside the vehicle

#### FINAL CHECK

- Hose fully seated
- No kinks
- Pass-through sealed

Install video + guide



Scan for install video

[mullerenergy.com.au/australian-standards](http://mullerenergy.com.au/australian-standards)